

# HARBOR ROAD REALIGNMENT PROJECT SAINT PAUL, ALASKA

**SHEET INDEX:**

G-1 SITE PLAN, VICINITY PLAN AND NOTES  
G-2 PROJECT SPECIFICATIONS

V-1 PROJECT SURVEY CONTROL  
V-2 PROJECT EASEMENTS EXHIBIT

C-1 ROAD ALIGNMENT  
C-2 ROAD DETAILS  
C-3 ROAD PLAN AND PROFILE - STA: 0+00 TO 13+00  
C-4 ROAD PLAN AND PROFILE - STA: 13+00 TO 25+50  
C-5 ROAD PLAN AND PROFILE - STA: 25+50 TO 33+98  
C-6 INTERSECTIONS  
C-7 ROAD CROSS SECTIONS  
C-8 SAND FILL COMPACTION STA: 0+00 TO 5+30

**PROJECT QUANTITIES:**

ROAD TOTAL LENGTH	3,398 FEET
ROAD REALIGNMENT	2,100 FEET
INTERSECTIONS	3 EACH
CUT NEAT QUANTITY	5,201 CYD
FILL NEAT QUANTITY	3,808 CYD
NET QUANTITY (CUT)	1,334 CYD
D-1 SURFACE COURSE	2,060 CYD
CULVERT	100 FT

**SCOPE OF WORK:**

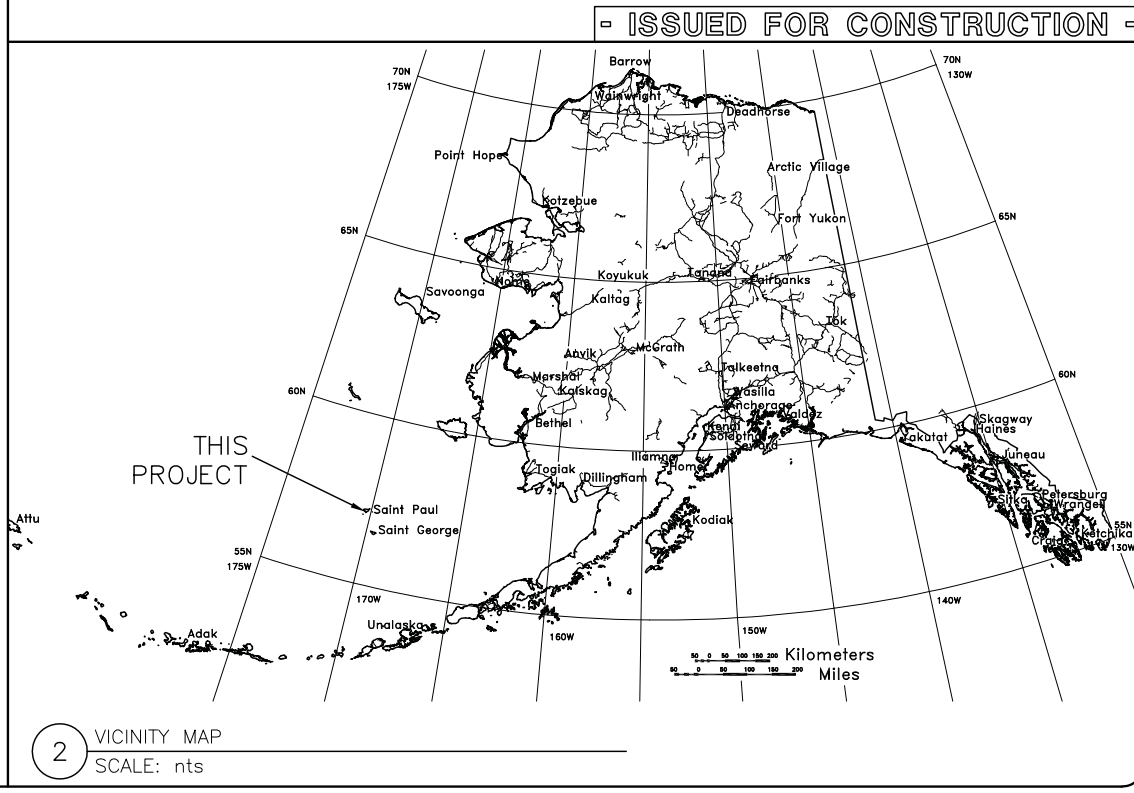
PROJECT RELOCATES THE EXISTING "HAUL ROAD" INTO THE HARBOR SUBDIVISION (ARD PLAT # 2013-19) ROAD RIGHT-OF-WAY AND UPGRADE THE EXISTING ROADWAY WITHIN ATS 1399 AND ATS 1375. PROJECT RUNS FROM POLOVINA TURNPIKE THROUGH THE HARBOR TO THE NORTH DOCK.

ROADWAY DESIGN SPEED IS 35 MPH, AND IS LIMITED BY EXISTING ROAD RIGHT-OF-WAY WIDTH AND EXISTING BUILDINGS ADJACENT TO THE ROADWAY.

CONSTRUCTION EASEMENTS 20' ON BOTH SIDES OF THE HARBOR ROAD RIGHT-OF-WAY WILL BE REQUIRED FROM ADJACENT LANDOWNER TO ALLOW FOR CONSTRUCTION OF THE NEW ROADWAY.

PROVISIONS INCLUDED FOR SITE DRAINAGE OF PRIVATE LOTS ON THE SOUTH SIDE OF THE ROADWAY TO BE COLLECTED AND DIRECTED INTO AND THROUGH CULVERT UNDER ROADWAY TO A DRAINAGE SWALE ACROSS PRIVATE LOT TO DAYLIGHT.

- GENERAL NOTES:**
1. COMPLY WITH ALL FEDERAL, STATE AND LOCAL REGULATIONS IN CONSTRUCTION OF PROJECT.
  2. COMPLY WITH ADEC REQUIREMENTS FOR WORK AREA DESIGNATION AS CRITICAL WATERSHED MANAGEMENT AREA. COORDINATE WITH ADEC, LOUIS HOWARD, AT (907) 269-7552.
  3. IF CULTURAL RESOURCES ARE INADVERTENTLY DISCOVERED AS A RESULT OF GROUND ALTERING ACTIVITIES; WORK THAT MAY DISTURB THESE RESOURCES SHOULD BE STOPPED IMMEDIATELY AND, THE STATE HISTORIC PRESERVATION OFFICE (907-269-8721) SHOULD BE CONSULTED REGARDING SIGNIFICANCE OF THE FINDS AND APPROPRIATE ACTIONS TO BE TAKEN TO AVOID, MINIMIZE OR MITIGATE ADVERSE IMPACTS. IN THE EVENT THAT HUMAN REMAINS ARE FOUND, THE ALASKA STATE TROOPERS MUST ALSO BE NOTIFIED.
  4. THE CONTRACTOR SHALL BE RESPONSIBLE FOR MAINTAINING ACCESS TO THE HARBOR AND PRIVATE FACILITIES DURING CONSTRUCTION. COORDINATE WITH CITY OF SAINT PAUL PUBLIC SAFETY DEPARTMENT.



**polarconsult alaska, inc.**  
ENERGY SYSTEMS • ENVIRONMENTAL SERVICES • ENGINEERING DESIGN

1608 WEST 33RD AVE, SUITE 310 PHONE (907) 268-2420  
ANCHORAGE, ALASKA 99503 FAX (907) 268-2419

**REVISIONS**

NO.	DATE	ADD NEW SHEETS V-2 AND C-8
1	8/24/15	

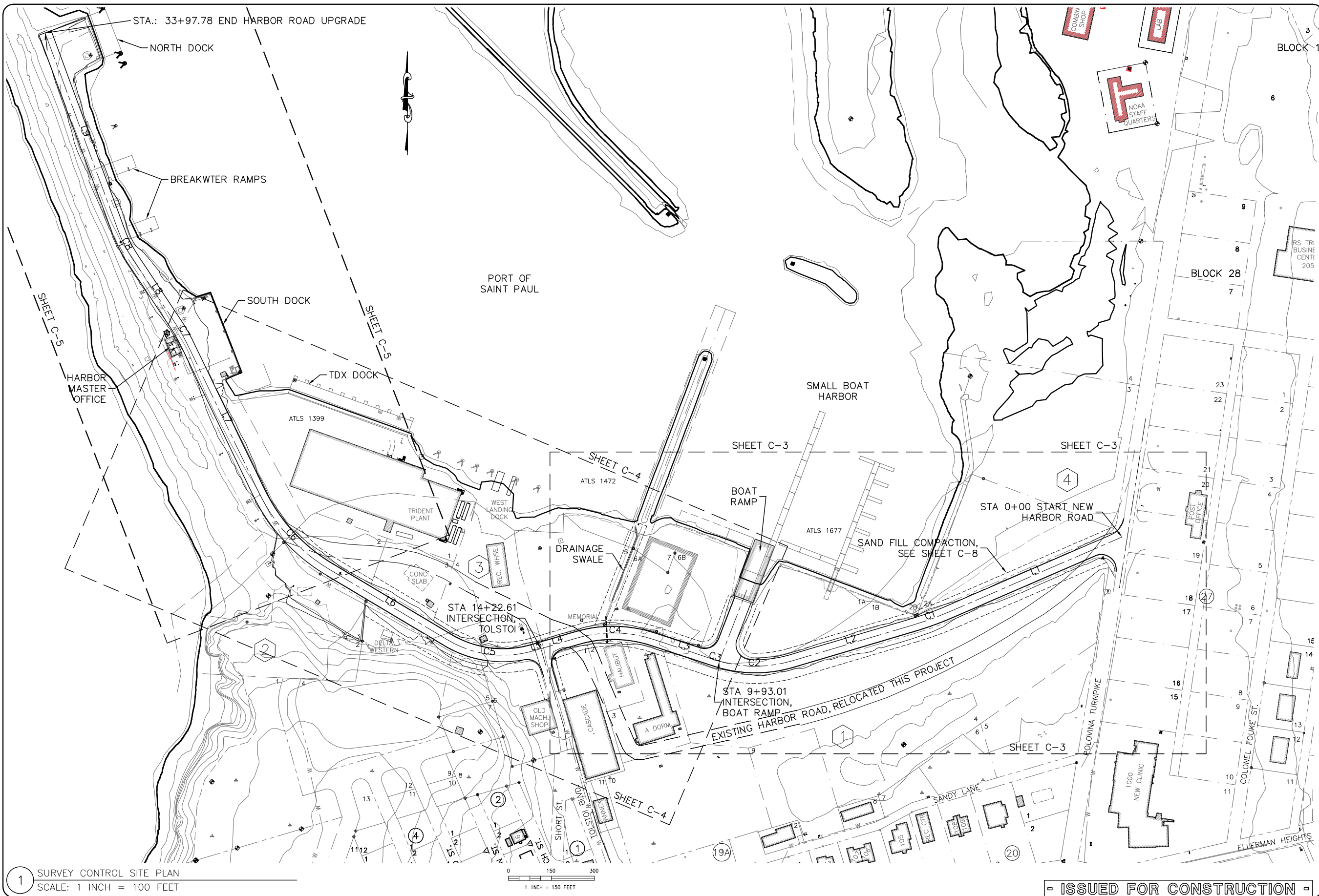
**SITE MAP, VICINITY MAP, SHEET INDEX AND GENERAL NOTES**

HARBOR ROAD REALIGNMENT  
CITY OF SAINT PAUL  
St. Paul, Alaska

DATE: 7/24/15  
DESIGNED: MD  
DRAWN:  
CHECKED: AshNoted  
SCALE:  
FILE: HarborUtil

**1** PROJECT SITE PLAN  
SCALE: 1 INCH = 400 FEET

**2** VICINITY MAP  
SCALE: nts



1 SURVEY CONTROL SITE PLAN  
SCALE: 1 INCH = 100 FEET

1 INCH = 150 FEET

- ISSUED FOR CONSTRUCTION -



**polarconsult alaska, inc.**  
 ENERGY SYSTEMS • ENVIRONMENTAL SERVICES • ENGINEERING DESIGN  
 1505 WEST 33RD AVE, SUITE 310 ANCHORAGE, ALASKA 99503  
 PHONE (907) 266-2420 FAX (907) 266-2419

NO.	DATE	REVISIONS
1	8/24/15	NEW SHEET C-8 ADDED

**ALIGNMENT AND CENTERLINE ELEVATIONS**  
 Drawing  
**HARBOR ROAD REALIGNMENT**  
 Project  
**CITY OF SAINT PAUL**  
 St. Paul, Alaska

DATE: 7/24/15  
 DESIGNED: MD  
 DRAWN:  
 CHECKED:  
 SCALE: AsNoted  
 FILE: SNP-HarRoad

Sheet  
**C-1**  
 OF 8

- ISSUED FOR CONSTRUCTION -



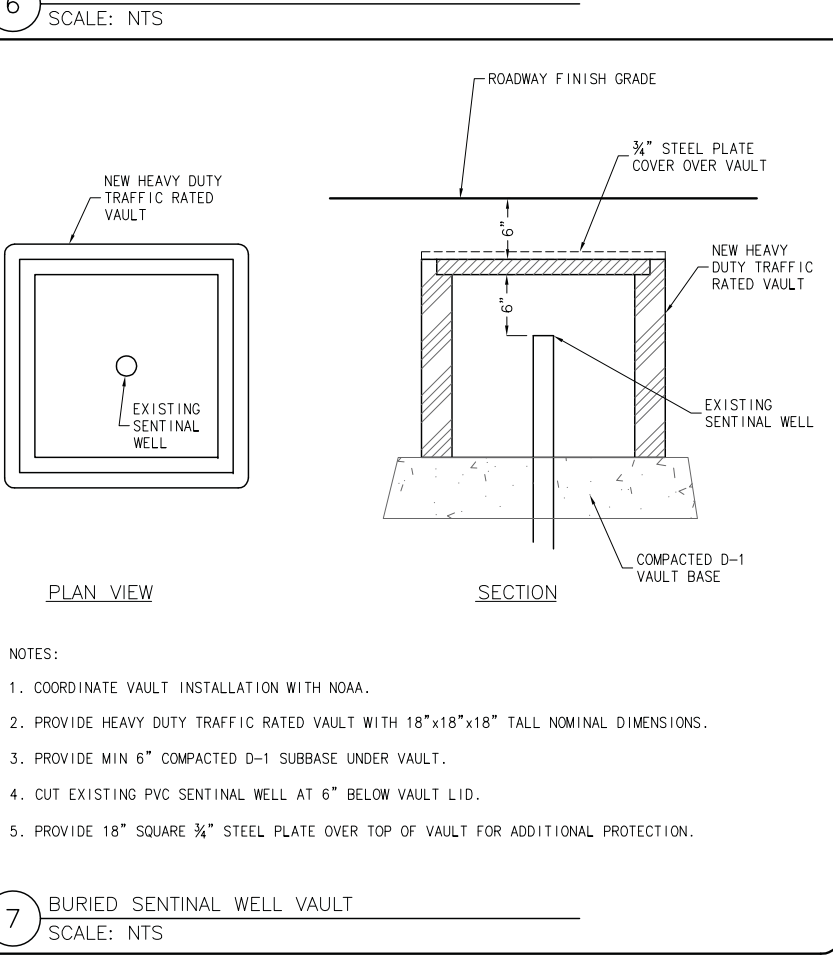
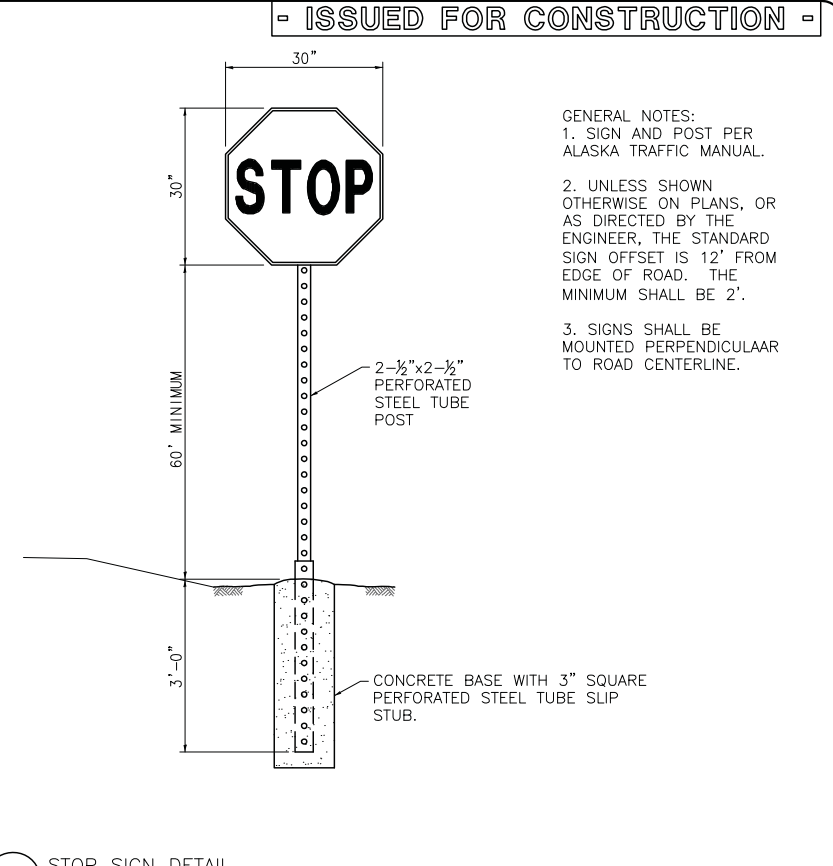
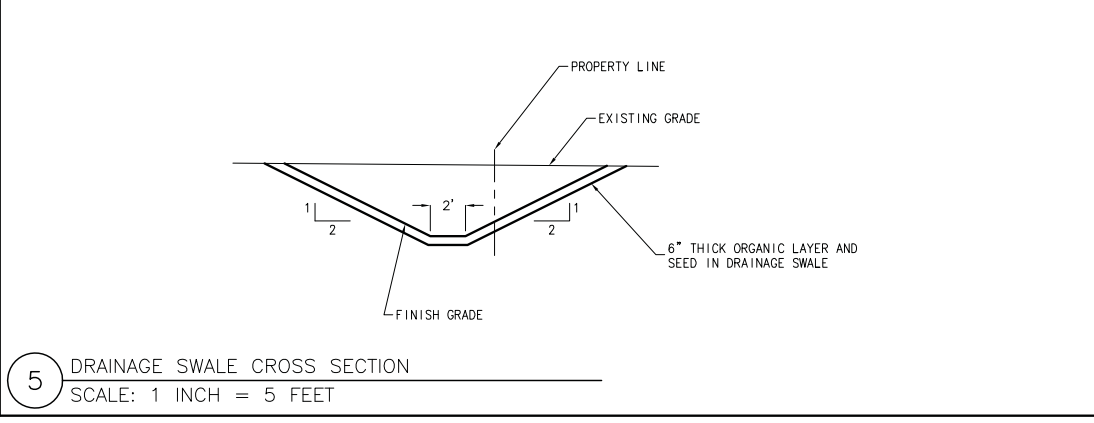
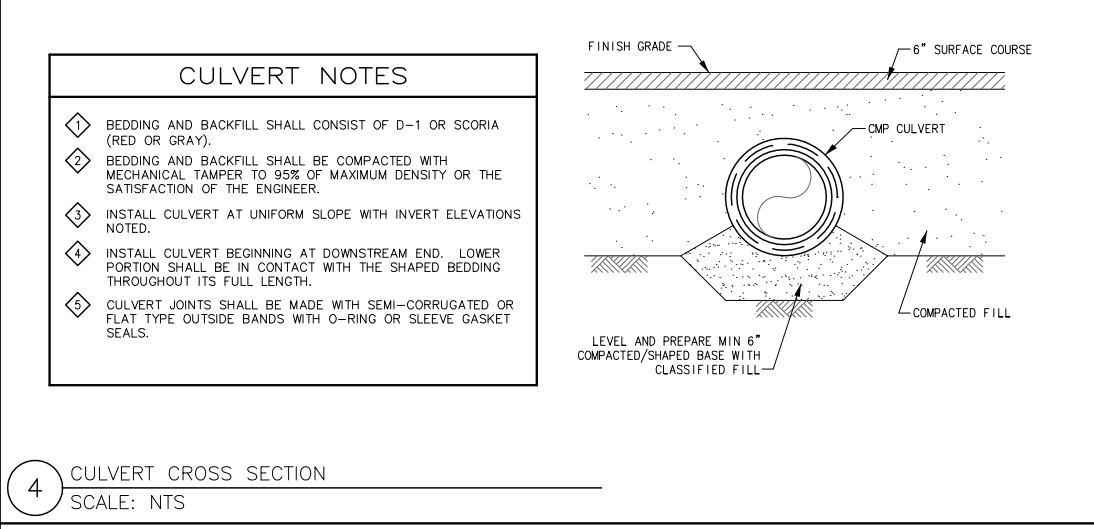
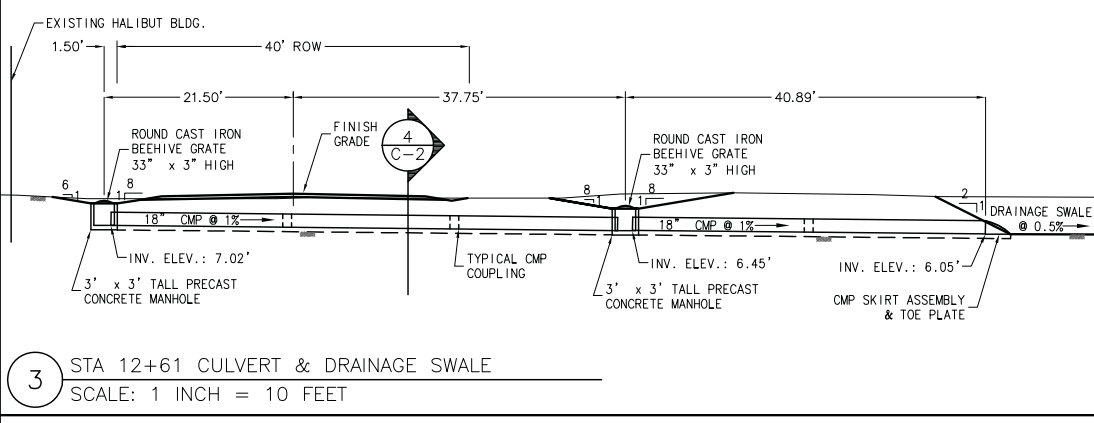
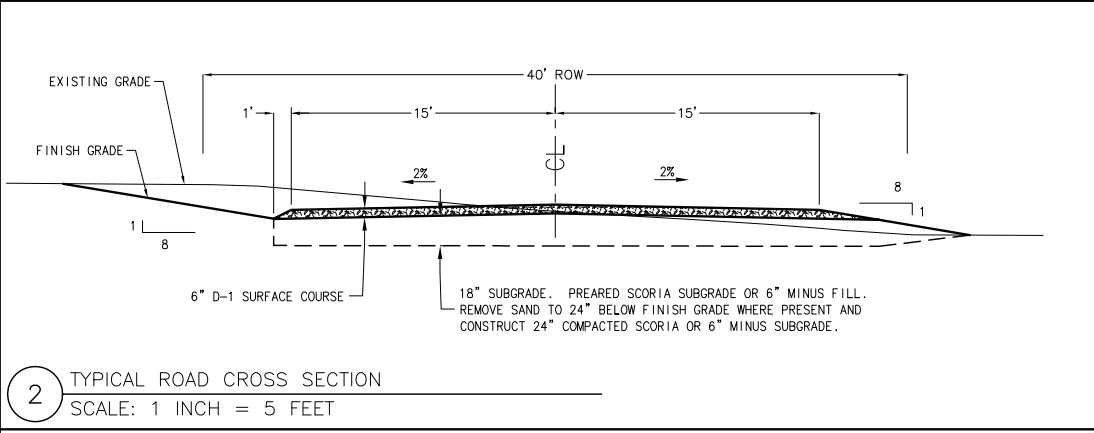
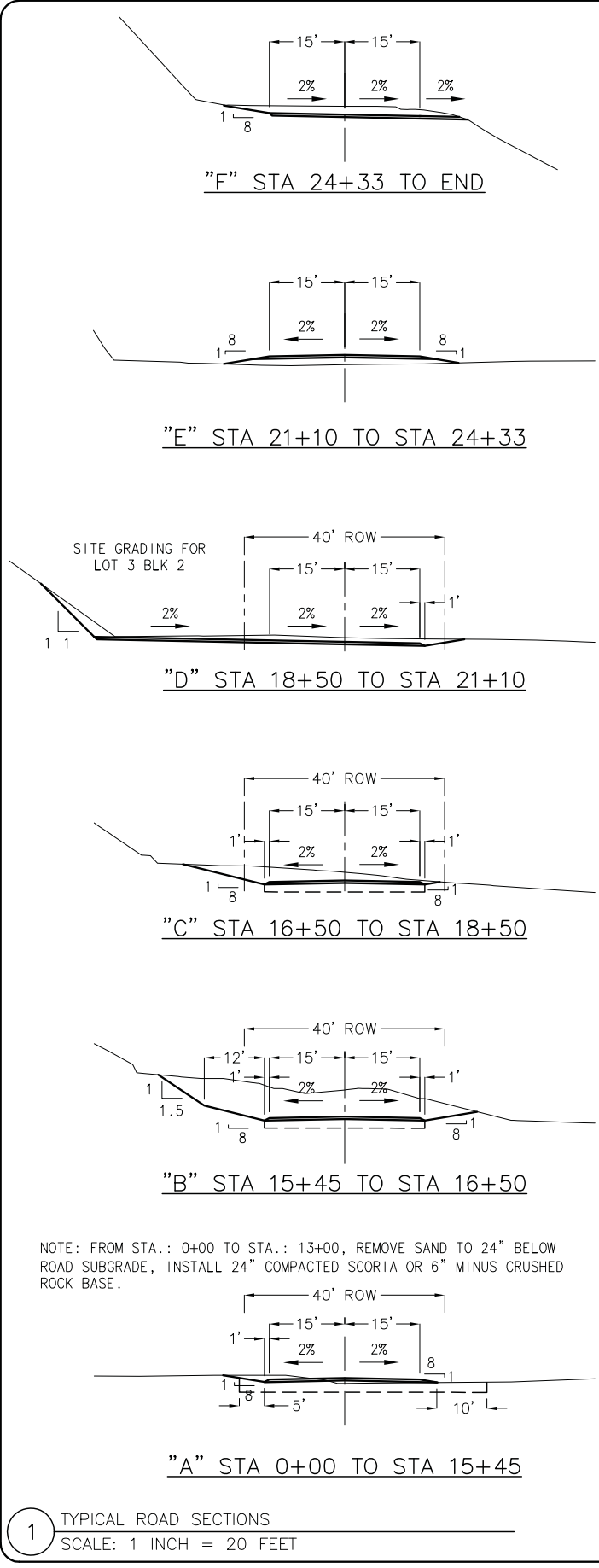
**polarconsult alaska, inc.**  
 ENERGY SYSTEMS • ENVIRONMENTAL SERVICES • ENGINEERING DESIGN  
 1505 WEST 33RD AVE., SUITE 310 ANCHORAGE, ALASKA 99503  
 PHONE (907) 266-2420 FAX (907) 266-2419

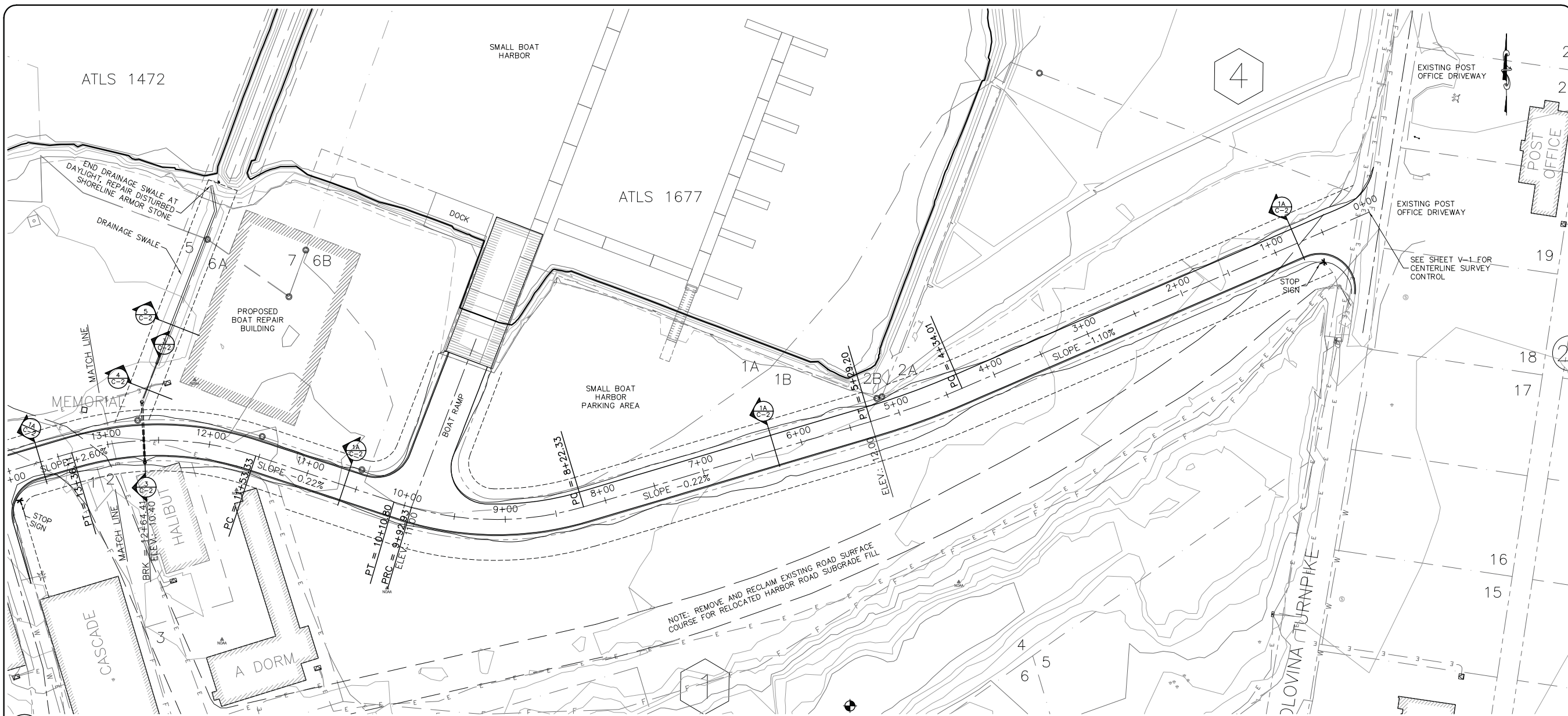
NO.	DATE	REVISIONS
1	8/24/15	NEW SHEET C-8 ADDED

**TYPICAL SECTIONS AND DETAILS**  
 Project: **HARBOR ROAD REALIGNMENT**  
 City of Saint Paul  
 St. Paul, Alaska

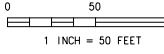
DATE: 7/24/15  
 DESIGNED: MD  
 DRAWN:  
 CHECKED: AsNoted  
 SCALE:  
 FILE: SNP-HarRoad

Sheet  
**C-2**  
 OF 8

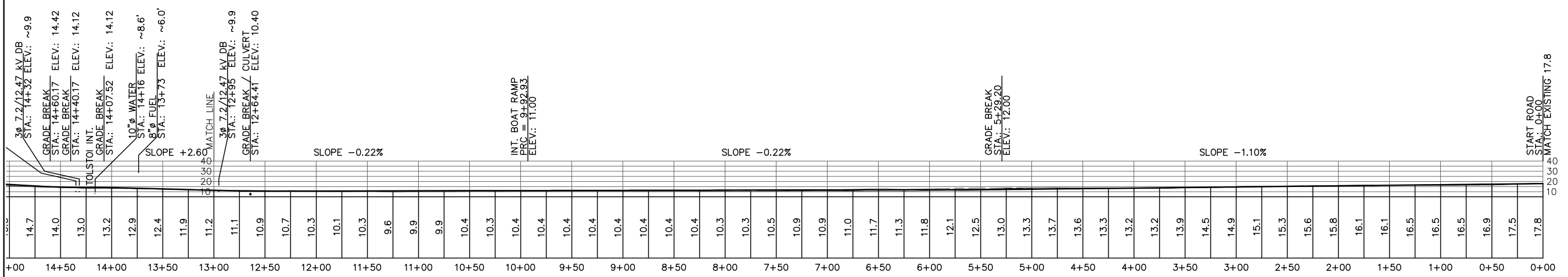




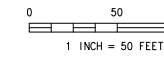
1 ROAD PLAN - STA.: 0+00 TO STA.: 13+00  
SCALE: 1 INCH = 50 FEET



ISSUED FOR CONSTRUCTION



2 ROAD PROFILE - STA.: 0+00 TO STA.: 13+00  
SCALE: 1 INCH = 50 FEET

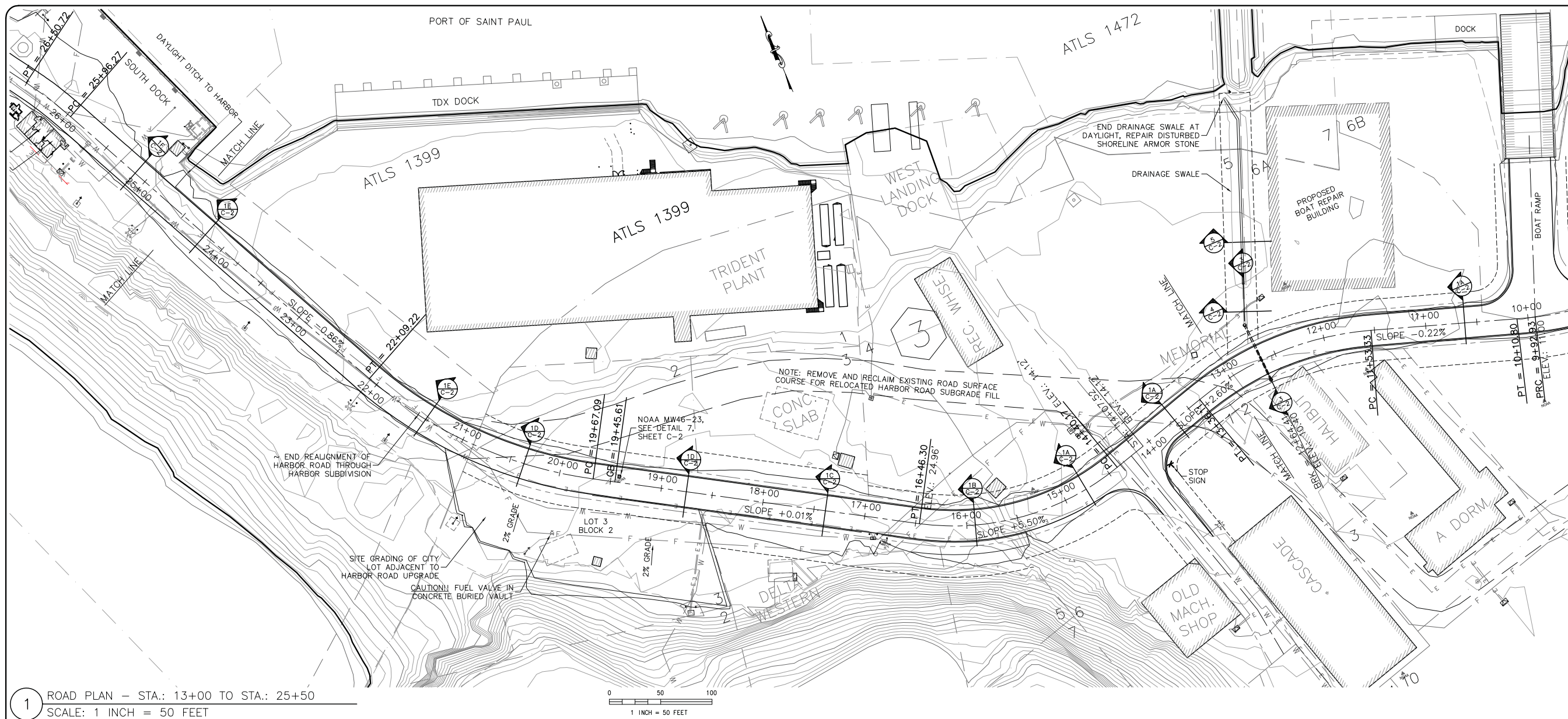


**polarconsult alaska, inc.**  
 ENERGY SYSTEMS • ENVIRONMENTAL SERVICES • ENGINEERING DESIGN  
 1503 WEST 33RD AVE, SUITE 310 PHONE (907) 266-2420  
 ANCHORAGE, ALASKA 99503 FAX (907) 266-2419

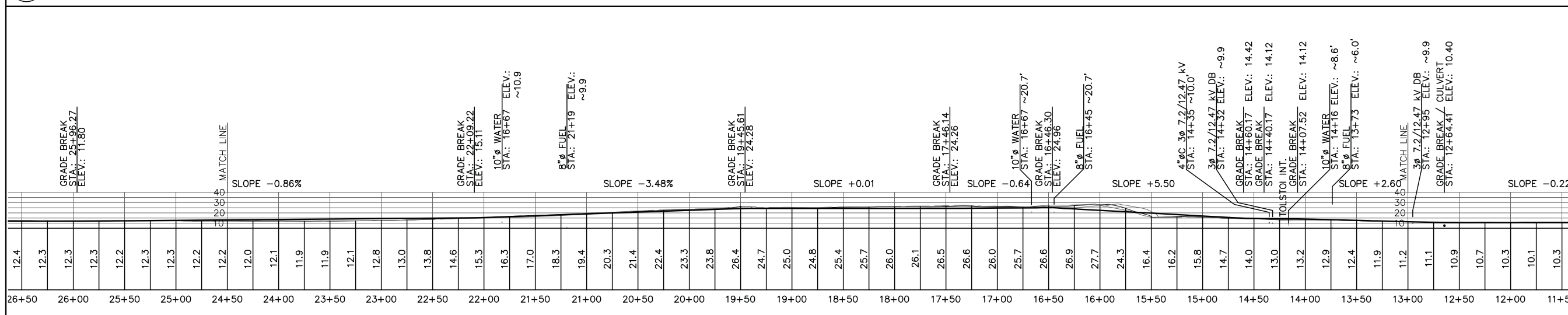
NO.	DATE	REVISIONS
1	8/24/15	NEW SHEET C-3 ADDED

Drawing  
**PLAN AND PROFILE**  
 STA.: 0+00 TO STA.: 13+00  
 Project  
**HARBOR ROAD REALIGNMENT**  
 CITY OF SAINT PAUL  
 St. Paul, Alaska

DATE: 7/24/15  
 DESIGNED: MD  
 DRAWN:  
 CHECKED:  
 SCALE: AsNoted  
 FILE: SNP-HarRoad



1 ROAD PLAN - STA.: 13+00 TO STA.: 25+50  
SCALE: 1 INCH = 50 FEET



2 ROAD PROFILE - STA.: 13+00 TO STA.: 25+50  
SCALE: 1 INCH = 50 FEET



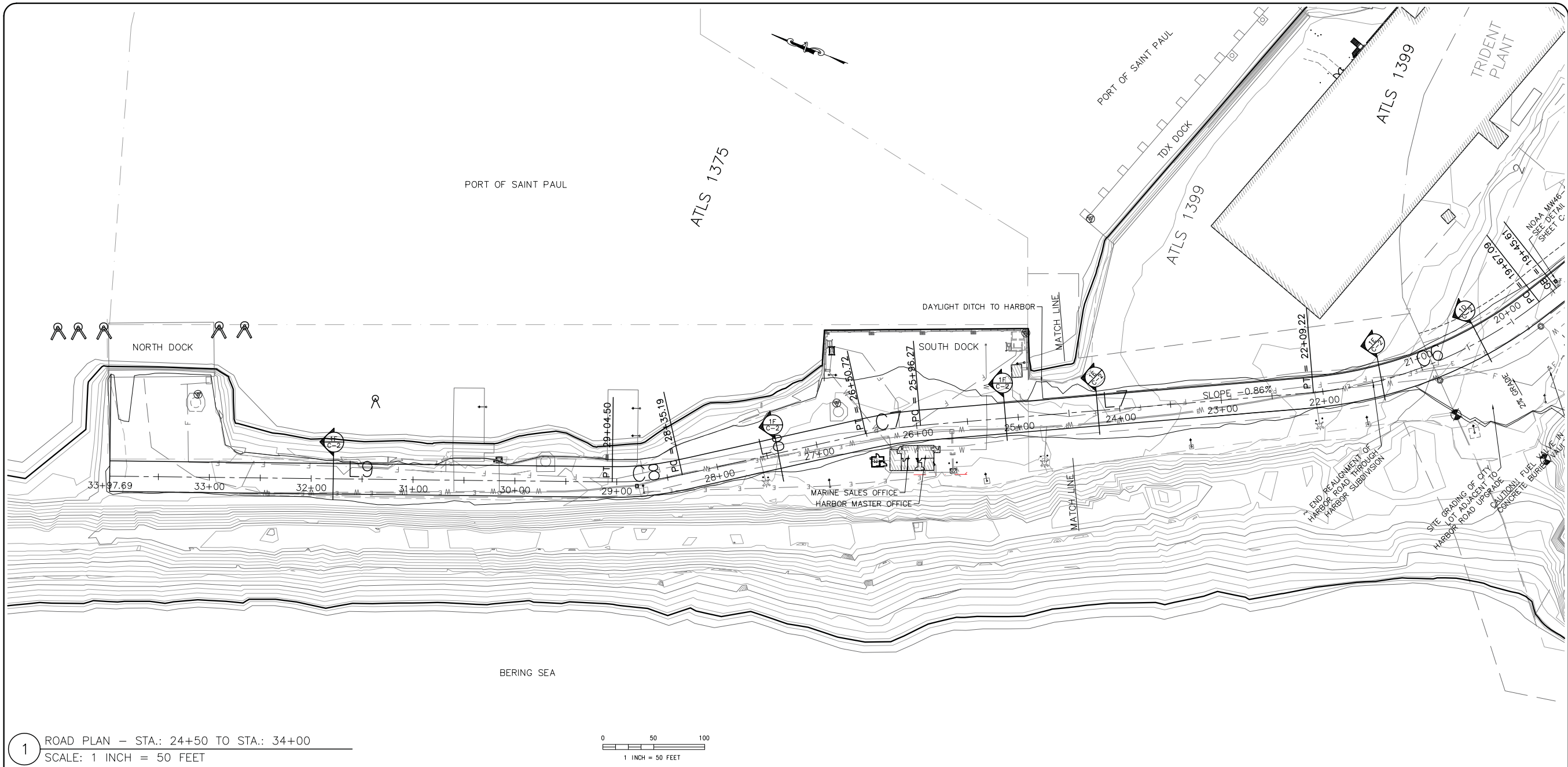
**polarconsult alaska, inc.**  
 ENERGY SYSTEMS • ENVIRONMENTAL SERVICES • ENGINEERING DESIGN  
 1503 WEST 33RD AVE, SUITE 310 ANCHORAGE, ALASKA 99503  
 PHONE (907) 268-2420 FAX (907) 268-2419

NO.	DATE	REVISIONS
1	8/24/15	NEW SHEET C-B ADDED

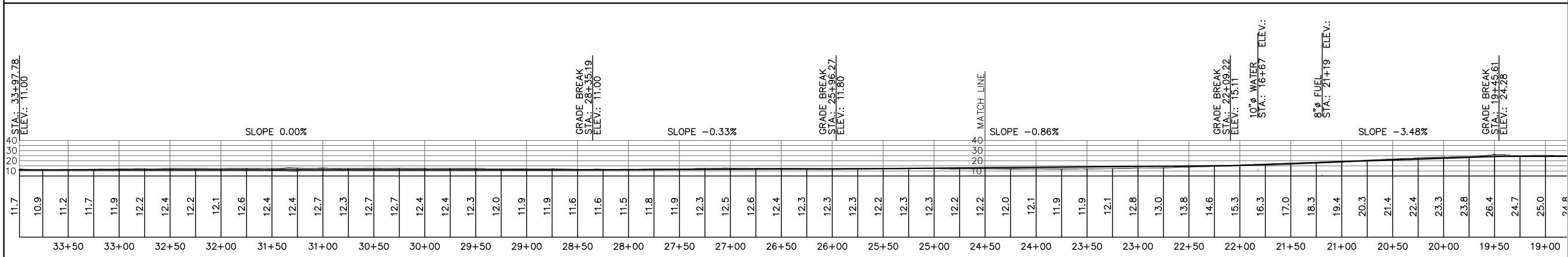
PLAN AND PROFILE  
 STA.: 13+00 TO STA.: 25+50  
 HARBOR ROAD REALIGNMENT  
 City of Saint Paul  
 St. Paul, Alaska

DATE: 7/24/15  
 DESIGNED: MD  
 DRAWN:  
 CHECKED: AsNoted  
 SCALE:  
 FILE: SNP-HarRoad

ISSUED FOR CONSTRUCTION



1 ROAD PLAN - STA.: 24+50 TO STA.: 34+00  
SCALE: 1 INCH = 50 FEET



2 ROAD PROFILE - STA.: 24+50 TO STA.: 34+00  
SCALE: 1 INCH = 50 FEET

ISSUED FOR CONSTRUCTION



**polarconsult alaska, inc.**  
 ENERGY SYSTEMS • ENVIRONMENTAL SERVICES • ENGINEERING DESIGN  
 1608 WEST 33RD AVE, SUITE 310 ANCHORAGE, ALASKA 99503  
 PHONE (907) 268-2420 FAX (907) 268-2419

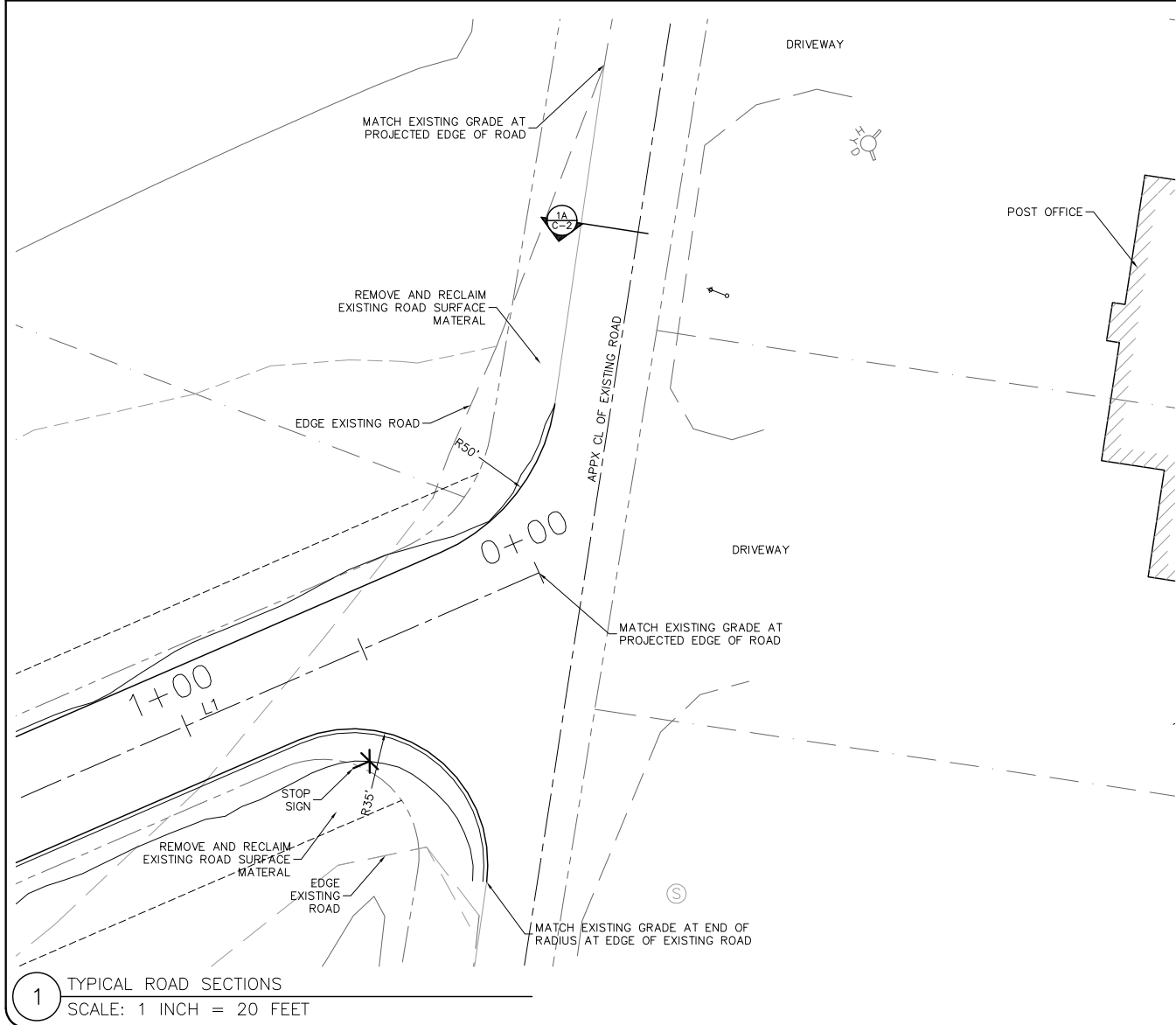
NO.	DATE	REVISIONS
1	8/24/15	NEW SHEET C-B ADDED

Drawing  
**PLAN AND PROFILE**  
 STA.: 24+50 TO STA.: 34+00  
 Project  
**HARBOR ROAD REALIGNMENT**  
 CITY OF SAINT PAUL  
 St. Paul, Alaska

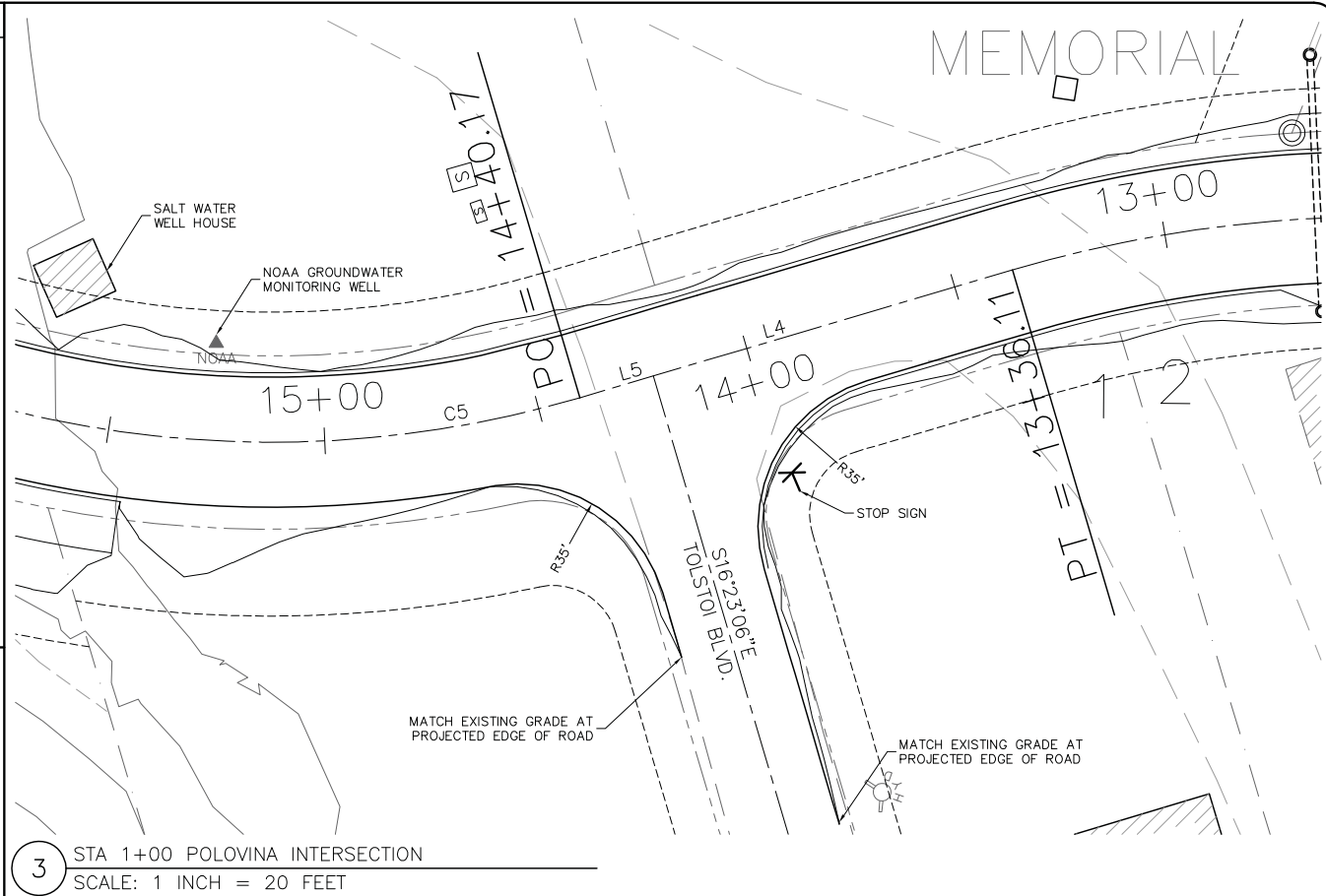
DATE: 7/24/15  
 DESIGNED: MD  
 DRAWN:  
 CHECKED:  
 SCALE: AsNoted  
 FILE: SNP-HarRoad

Sheet  
**C-5**  
 OF 8

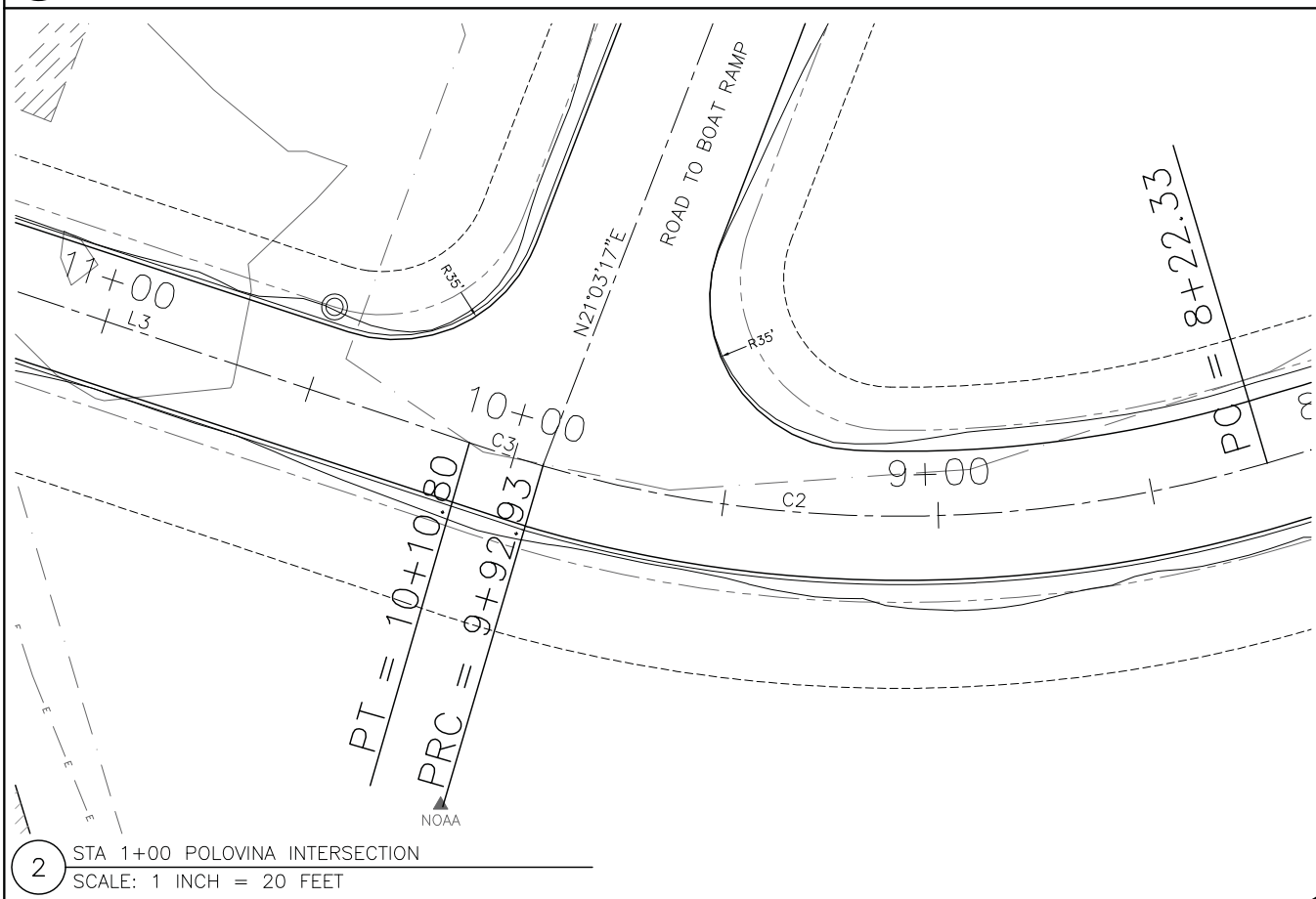
- ISSUED FOR CONSTRUCTION -



1 TYPICAL ROAD SECTIONS  
SCALE: 1 INCH = 20 FEET



3 STA 1+00 POLOVINA INTERSECTION  
SCALE: 1 INCH = 20 FEET



2 STA 1+00 POLOVINA INTERSECTION  
SCALE: 1 INCH = 20 FEET



**polarconsult alaska, inc.**  
 ENERGY SYSTEMS • ENVIRONMENTAL SERVICES • ENGINEERING DESIGN  
 1503 WEST 33RD AVE, SUITE 310 PHONE (907) 266-2420  
 ANCHORAGE, ALASKA 99503 FAX (907) 266-2419

NO.	DATE	REVISIONS
1	8/24/15	NEW SHEET C-8 ADDED

**INTERSECTIONS**  
 Drawing  
**HARBOR ROAD REALIGNMENT**  
 Project  
**CITY OF SAINT PAUL**  
 St. Paul, Alaska

DATE: 7/24/15  
 DESIGNED: MD  
 DRAWN:  
 CHECKED:  
 SCALE: AsNoted  
 FILE: SNP-HarRoad

ISSUED FOR CONSTRUCTION



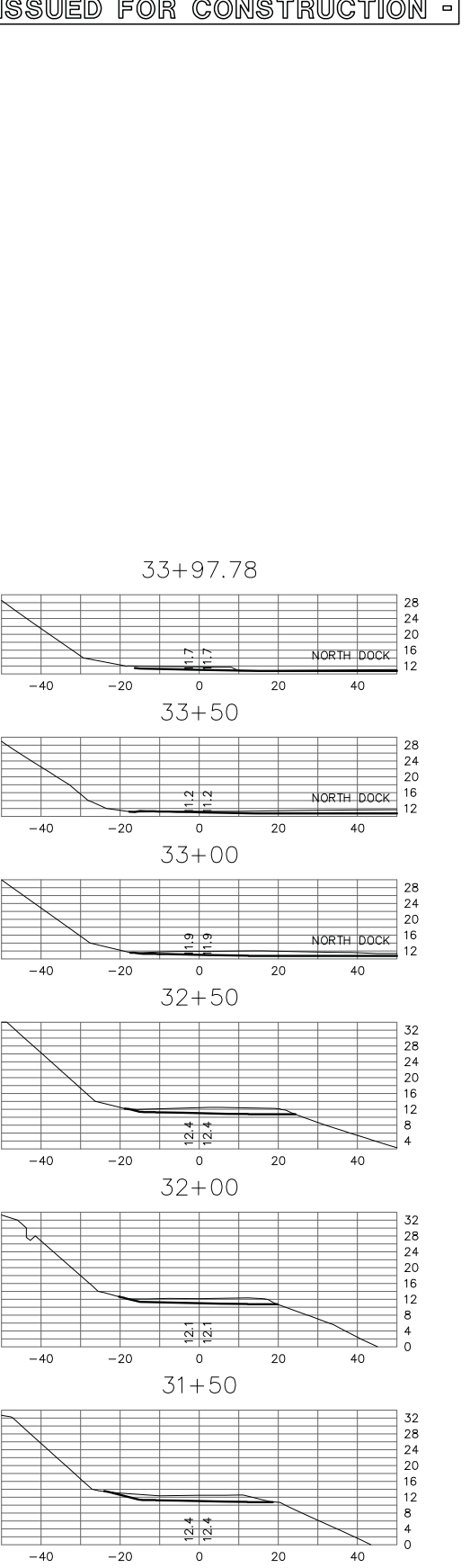
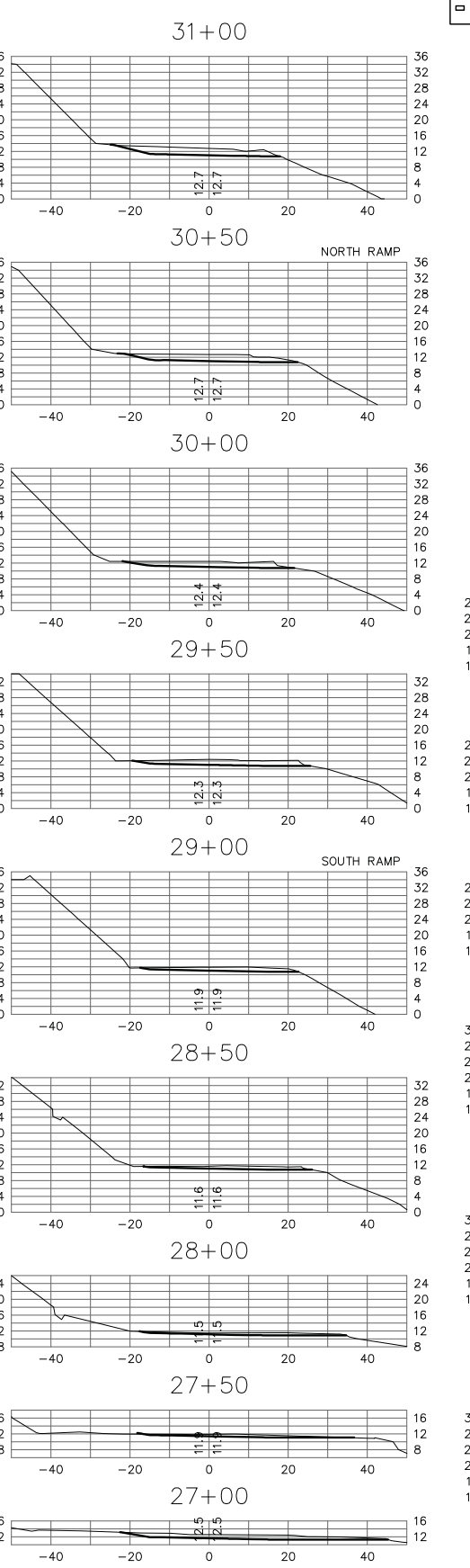
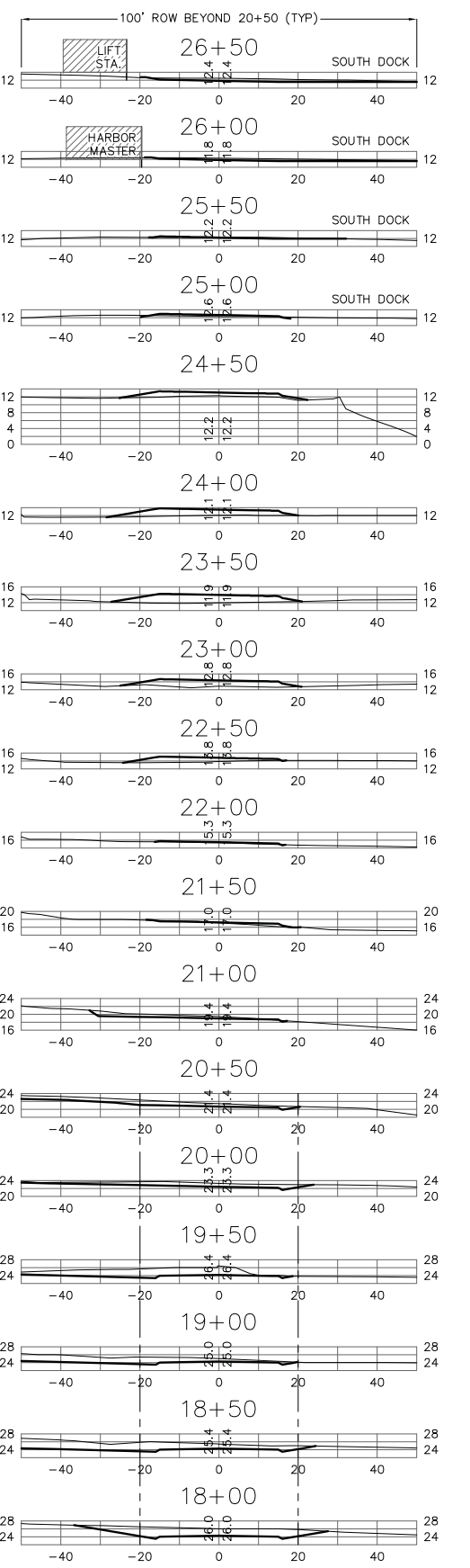
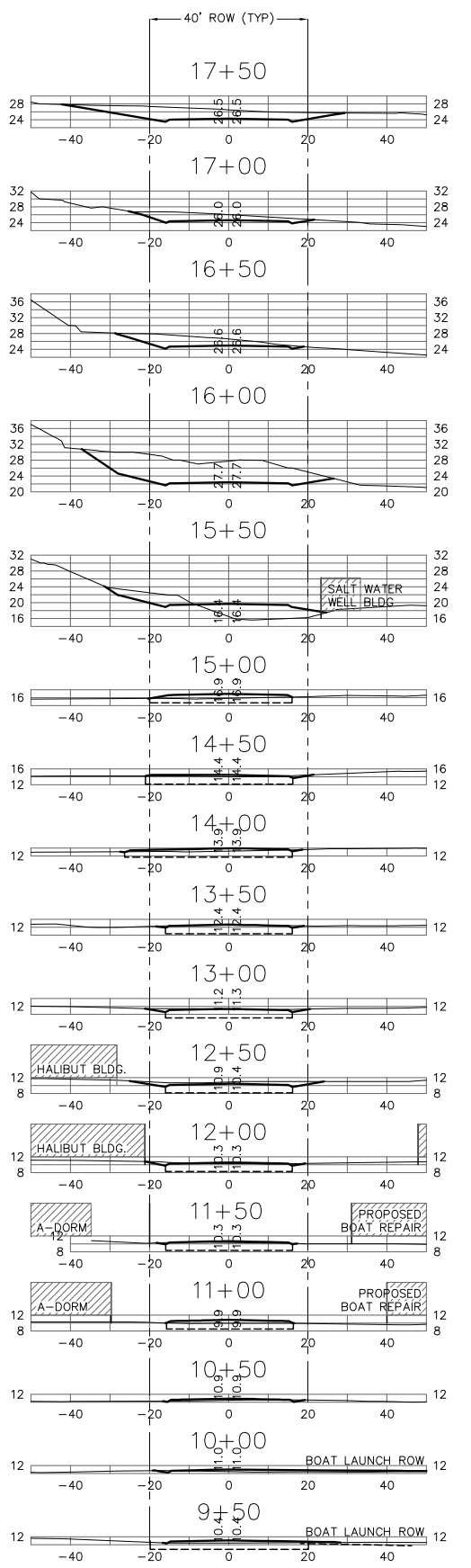
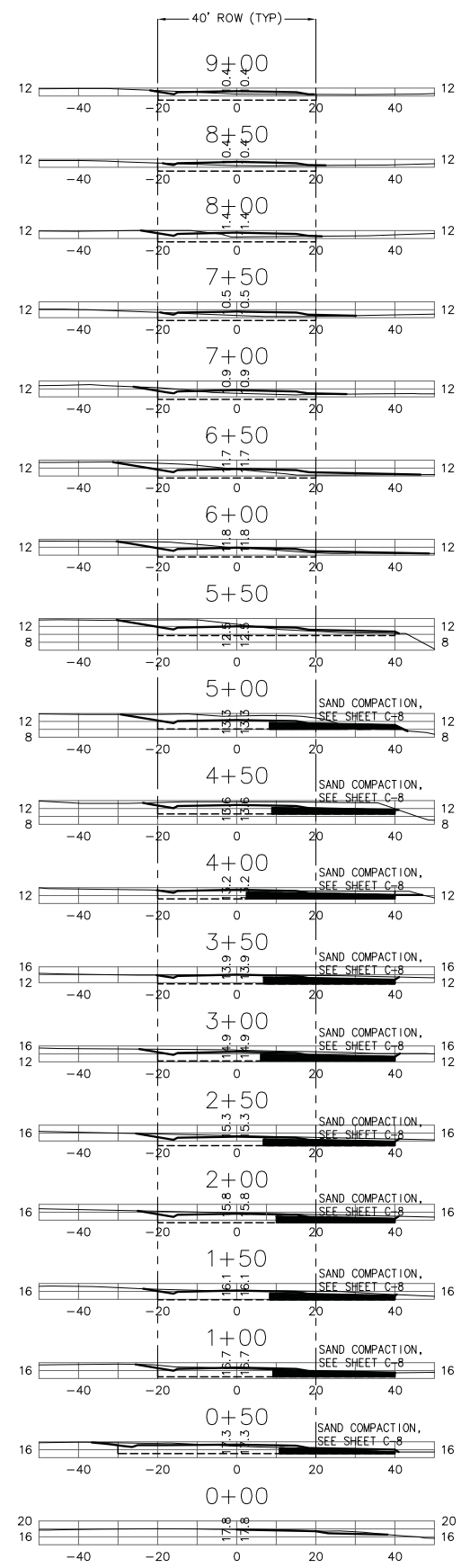
**polarconsult alaska, inc.**  
 ENVIRONMENTAL SERVICES • ENGINEERING DESIGN  
 1605 WEST 33RD AVE, SUITE 310 ANCHORAGE, ALASKA 99503  
 PHONE (907) 268-2420 FAX (907) 268-2419

NO.	DATE	REVISIONS
1	8/24/15	NEW SHEET C-B ADDED

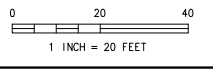
**CROSS SECTIONS**  
 Harbor Road Realignment  
 City of Saint Paul  
 St. Paul, Alaska

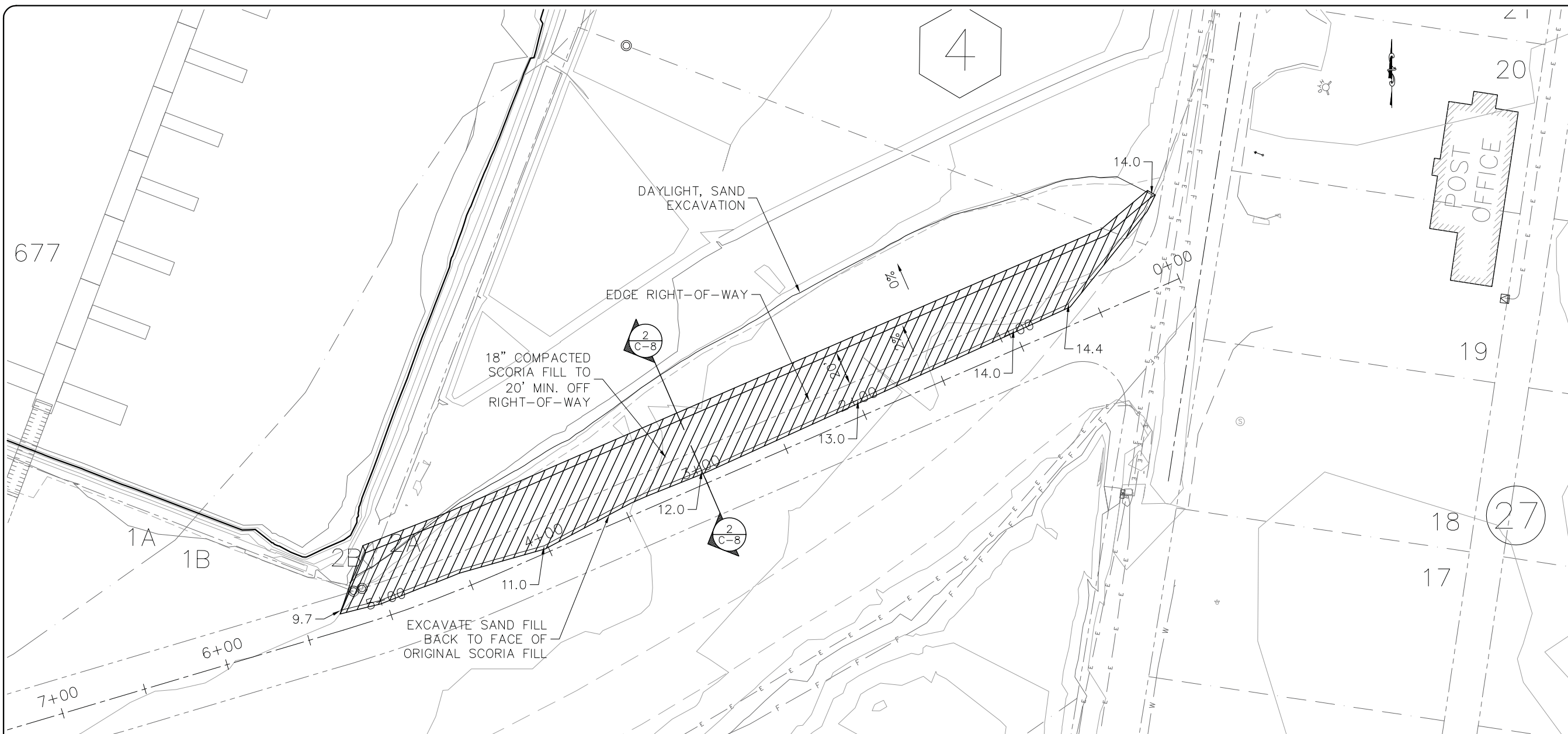
DATE: 7/24/15  
 DESIGNED: MD  
 DRAWN:  
 CHECKED: AshNoted  
 SCALE: 1" = 20'  
 FILE: SNP-HarRoad

Sheet  
**C-7**  
 OF 8

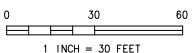


1 CROSS SECTIONS  
 SCALE: 1 INCH = 20 FEET

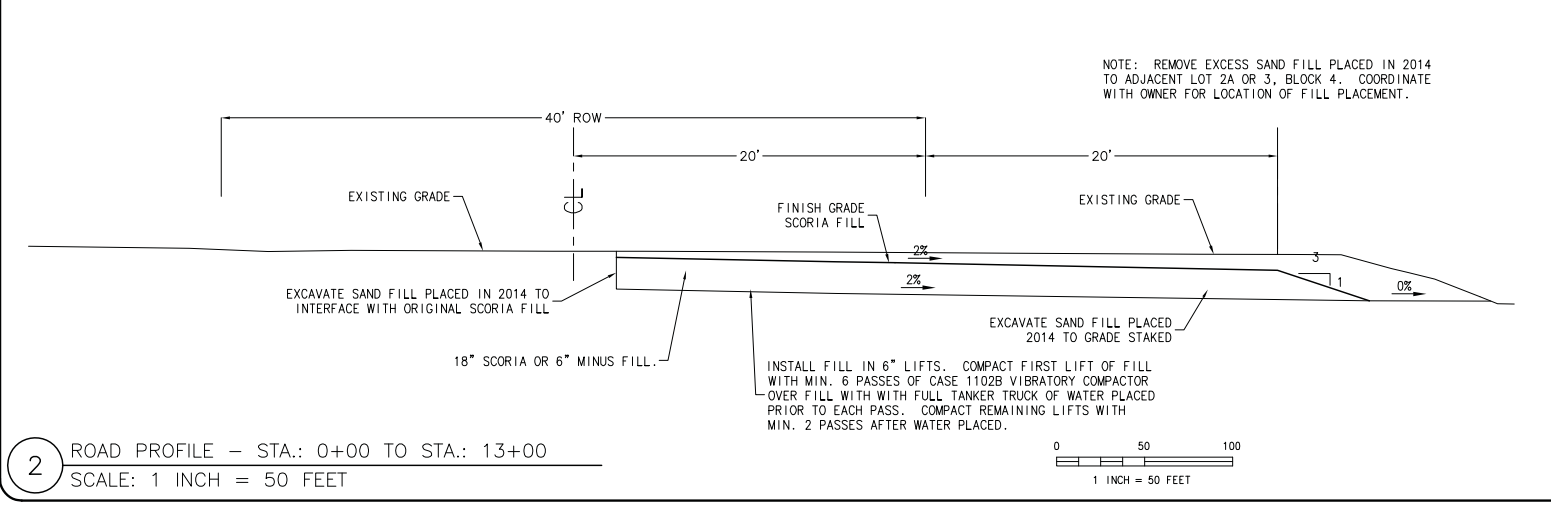




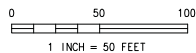
1 ROAD PLAN - STA.: 0+00 TO STA.: 5+30  
SCALE: 1 INCH = 30 FEET



- ISSUED FOR CONSTRUCTION -



2 ROAD PROFILE - STA.: 0+00 TO STA.: 13+00  
SCALE: 1 INCH = 50 FEET



NOTES:

1. SEE ORIGINAL DESIGN DRAWING "LOTS 2 & 3 BLOCK 4, HARBOR SUBDIVISION (PENDING) PHASED CONSTRUCTION PLAN" DATED 8/9/13 BY DHI CONSULTING ENGINEERS OR DRAWING OF SAME NAME DATED 12/4/12, EXHIBIT 11 IN SETTLEMENT AGREEMENT FOR REFERENCE.
2. SAND FILL INSTALLED IN 2014 NOT COMPACTED AS CALLED FOR IN ORIGINAL DESIGN DRAWINGS.
3. WORK IDENTIFIED ON THIS SHEET TO BE COMPLETED TO PROVIDE COMPACTION OF SAND FILL, AND ALLOW FOR CONSTRUCTION OF NEW HARBOR ROAD.
4. COMPLETE WORK SHOWN ON THIS SHEET PRIOR TO START OF CONSTRUCTION OF REALIGNED HARBOR ROAD.
5. REMOVE EXCESS SAND FILL INSTALLED IN 2014 TO ADJACENT LOT 2A OR 3, BLOCK 4. COORDINATE PLACEMENT WITH LOT OWNER.
6. INSTALL SCORIA OR 6-INCH MINUS ROCK FILL IN 6" LIFTS.
7. COMPACT FIRST LIFT WITH A MINIMUM OF 6 PASSES WITH CASE 1102B VIBRATORY COMPACTOR. PROVIDE FULL TANKER TRUCK OF WATER OVER FILL PLACED JUST PRIOR TO COMPACTION.
8. COMPACT REMAINING 6" LIFTS WITH A MINIMUM OF 2 PASSES WITH CASE 1102B VIBRATORY COMPACTOR. PROVIDE FULL TANKER TRUCK OF WATER OVER FILL PLACED JUST PRIOR TO COMPACTION.



**polarconsult alaska, inc.**  
 ENERGY SYSTEMS • ENVIRONMENTAL SERVICES • ENGINEERING DESIGN  
 1608 WEST 33RD AVE, SUITE 310 ANCHORAGE, ALASKA 99503  
 PHONE (907) 268-2420 FAX (907) 268-2419

NO.	DATE	REVISIONS
1	8/24/15	NEW SHEET C-8

Drawing: **SUBGRADE ROAD COMPACTION PLAN, SECTION AND NOTES**  
 STA.: 0+00 TO STA.: 5+30  
 Project: **HARBOR ROAD REALIGNMENT CITY OF SAINT PAUL St. Paul, Alaska**

DATE: 7/24/15  
 DESIGNED: MD  
 DRAWN:  
 CHECKED:  
 SCALE: AsNoted  
 FILE: SNP-HarRoad

Sheet  
**C-8**  
 OF 8